

# American Society for Veterinary Clinical Pathology

June 1, 2011 • Volume 2011, Issue 2 • [www.asvcp.org](http://www.asvcp.org) • [info@asvcp.org](mailto:info@asvcp.org)

## President's Message

---

By Kirstin Barnhart, ASVCP President

### Coming in June – the Inaugural ASVCP Chemistry Case Bank!

After several years of discussion and planning by the Executive Board, I am very pleased to be able to announce that the first ASVCP sponsored Chemistry Case Bank has been completed and will be made available to the membership in June. I would like to extend a huge thanks to Leslie Sharkey, Jed Overman, Pete Fernandes, and The Rees Group for all their efforts in putting this case bank together. Over the past year, they have compiled over 60 chemistry cases that include detailed write-ups, ancillary diagnostics and scanned hematology, cytology and radiology issues. These cases were originally designed to be used as both a teaching tool for educators and a study tool for trainees and candidates preparing for the certifying examination. However, I have to admit that as pathologist, I simply find it fun to analyze these cases myself and then read how my colleagues interpret them!

As soon as the final formatting of these cases on the website is complete, you will receive an e-mail notification and a link to the website. The case bank is currently in a pilot format. Please take the time to review and enjoy. In approximately 6 months, we will be sending out a survey asking for your opinion on what we can do to enhance the benefit of the case bank.

For the past several months, the Executive Board has also devoted much of its time to improving the infrastructure of the organization in order to better manage the growing list of standing committees, workshops, educational sessions and web-based initiatives. To that end, we recently implemented Basecamp, a document management system that will allow us to maintain our documents in a centralized location, assign task lists and due dates, and facilitate document distribution. In addition, growth of the society has necessitated that we establish a formal policy manual. Members of the Executive Board are currently working with The Rees Group to complete key policies and position descriptions.

And finally - congratulations to Jeanne George who recently received the honor of Lifetime Membership in the ASVCP. It is a small token of gratitude from the ASVCP for an individual who has made exceptional contributions not only to the organization also but the field of veterinary clinical pathology.

## Table of Contents

---

Executive Board .....	2	Final Call: Annual ASVCP/ECVP Case Review.....	5
Final Call : Annual ASVCP Cytology/Hematology Case Review .....	3	ASVCP Share the Future.....	6
Final Call: Annual ASVCP Clinical Chemistry Review .....	4	General Information.....	7
Second Call for Officer Nominations .....	4	Announcements.....	7
Microscopic Art Corner .....	4	ASVCP Committee Updates.....	8
Second Call: ASVCP Lifetime Achievement Award .....	5	News from Veterinary Clinical Pathology.....	9
Final Call: 2011 ASVCP/ACVP Meeting Abstracts		Tox Path News.....	9
Clinical Pathology Scientific Sessions .....	5	ASVCP Important Dates.....	10
ASVCP Young Investigator Award.....	5	Upcoming Meetings.....	10
ACVP Young Investigator Award .....	5		



The ASVCP is a nonprofit scientific organization dedicated to the promotion of scientific advancement, education, and standards in veterinary laboratory medicine. Our members include veterinary clinical pathologists and trainees, medical technologists, specialty veterinarians, and diagnosticians in veterinary and medical schools, biomedical and pharmaceutical companies, diagnostic and government laboratories, and private veterinary practices throughout the United States and in over 20 countries worldwide.

#### ASVCP

2424 American Lane  
Madison, WI 53704 USA  
Phone: +1-608-443-2479  
Fax: +1-608-443-2474  
Email: [info@asvcp.org](mailto:info@asvcp.org)  
Web: [www.asvcp.org](http://www.asvcp.org)

# Executive Board



**President**  
Kirstin Barnhart  
[kfbarnha@mdanderson.org](mailto:kfbarnha@mdanderson.org)



**President-Elect**  
Leslie Sharkey  
[Shark009@umn.edu](mailto:Shark009@umn.edu)



**Board Member (Second Year)**  
Marlyn Whitney  
[whitneym@missouri.edu](mailto:whitneym@missouri.edu)



**Board Member (First Year)**  
Anne Provencher Bolliger  
[provencher.bolliger@hotmail.com](mailto:provencher.bolliger@hotmail.com)



**Secretary**  
Robin Allison  
[robin.allison@okstate.edu](mailto:robin.allison@okstate.edu)



**Treasurer**  
Dori Borjesson  
[dlborjesson@ucdavis.edu](mailto:dlborjesson@ucdavis.edu)



**Immediate Past-President**  
Joanne Messick  
[jmessic@purdue.edu](mailto:jmessic@purdue.edu)



**ACVP Council Representative**  
Maxey Wellman  
[wellman.3@osu.edu](mailto:wellman.3@osu.edu)

# Final Call : Annual ASVCP Cytology/Hematology Case Review

**Submissions Due June 15, 2011**

Submissions are requested for the 2011 ASVCP Cytology & Hematology Case Review Session. Materials that may be submitted include hematology, cytology or surgical pathology slides, electron photomicrographs and associated clinical chemistry or hematology data. This is a popular and interactive opportunity to share cases and experiences among attendees. Cases that are based solely or predominantly on clinical chemistry (no slides involved) are more appropriate for submission for the Clinical Chemistry Review Session (see call for cases for the Clinical Chemistry Review Session, below).

## Type of Material Requested

Cases should be classic examples or unique or unusual representations of diseases, clinical cases, or research data with a clinical pathologic focus. Cases may represent any species. Stained, cover-slipped glass slides are preferred, but in certain cases, digital images will be considered. Surgical biopsies should be from lesions that would be examined cytologically and ideally the submission should include a cytologic preparation. Analytic problems that are associated with instrumentation, assay conditions, statistical analysis or specimen handling are also welcome; please consider the new ASVCP Clinical Chemistry Review Session for longer and/or more detailed presentations.

## Case Submission: Materials Needed

For cytology and blood smear submissions, eighty (80) stained and coverslipped glass slides should be submitted for each case. If more than 80 slides are available, the submitter is encouraged to submit extras, in case any slides are broken during shipment. The submitter must check all glass slides to assure their quality. Please do not attach adhesive labels to the glass slides. If digital images are submitted, send only one image. For surgical biopsy cases, submit one glass slide and if the case is accepted, the submitter will then be asked to supply 80 copies of the stained and coverslipped specimen. For clinical chemistry or hematology cases, laboratory data including reference intervals for your laboratory should be submitted.

## Electronic Submission and Printed Materials

Cases MUST be submitted using the online forms posted at the ASVCP website ([www.asvcp.org](http://www.asvcp.org)). Two files will be submitted electronically:

1. The first file is the Case History to be distributed with data prior to the meeting and should include contributors, signalment, concise history and clinical findings. Please only include pertinent laboratory data and summarize this if possible. Reference intervals for the laboratory data must be provided. The submitter is encouraged to also provide ques-

tions to be answered at the case review session. It is hoped that these questions will inspire participants to review and investigate the data before the meeting.

2. The second file is the Case Summary, which has information to be distributed at the meeting and should include the information on the first file, plus diagnosis, discussion (including answers to the questions that were provided) with images and references.

## Digital Images

The submitter MUST also include 2-3 digital images as indicated on the Case Summary form. The images should be 1024 X 768 pixels in a JPEG format with compression set on high quality; images must clearly show cytologic features of the lesion. A figure legend should accompany the images. Inclusion of digital images is required as part of the submission process.

## Digital Slides

A limited number of electronic slides/cases (likely up to two) may be considered. Please contact Anne Provencher Bolliger if you are interested in submitting in this format.

The goal of this session is to stimulate discussion. Presentation of common laboratory abnormalities that are not related to the case is unnecessary as is a lecture or literature review with each case.

## When and Where to Submit

The deadline for receipt of submission of ALL case materials is June 15, 2011. Slides with a cover letter indicating CONTRIBUTOR NAME(S), INSTITUTION, SPECIMEN, and E-MAIL ADDRESS must be sent to the address given below and received by this date. Submitters will be notified of the results of the selection process by August 1, 2011. It is anticipated that approximately 20 cases will be selected for presentations, depending on the complexity of the cases. Be sure to include your e-mail address with your submission.

## For additional information please contact:

Dr. Anne Provencher Bolliger  
[provencher.bolliger@hotmail.com](mailto:provencher.bolliger@hotmail.com)

## Case submission and material should be sent to:

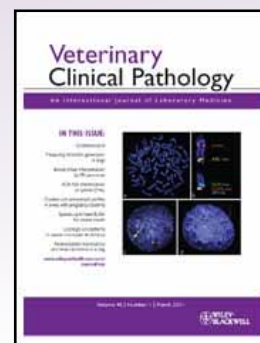
Case Review Slides and Mystery Slides  
American Society for Veterinary Clinical Pathology  
2424 American Lane, Madison, WI 53704  
Telephone: +1-608-443-2479

## From the Journal...

The mission of *Veterinary Clinical Pathology* is to provide an international forum for the communication and discussion of scientific investigations and new developments that advance the art and science of comparative laboratory medicine in domestic, nondomestic, and laboratory animals.

Full-text online articles, including e-publications ahead of print, are available through the Members Only Section at [www.asvcp.org](http://www.asvcp.org)

Remember to sign up for e-alerts to receive e-mail notification when new content is available.



## Final Call: Annual ASVCP Clinical Chemistry Review

*Submissions Due June 15, 2011*

---

### Type of Materials Requested

Submissions are requested for the fourth ASVCP Clinical Chemistry Review Session. Submitted materials should focus on the interpretation of chemistry data, including but not limited to the routine serum chemistry panel. Ancillary clinical pathology and other data as needed for the presentation of the case is appropriate. Cases may represent any species and an interactive presentation style is encouraged. The cases should be challenging and solvable based on information provided. Results of toxicology studies, cases involving the interpretation of quality control materials or validation studies as well as individual clinical case presentations will be considered for this session. The ASVCP Clinical Chemistry Review Session is held at a separate time from the ASVCP Cytology and Hematology Case Review Session that involves cytology and hematology slides or images (see above for the call for cases for that session).

### Case Submission

Cases **MUST** be submitted using the online forms posted at the ASVCP website ([www.asvcp.org](http://www.asvcp.org)). Reference intervals for the laboratory data should be provided. Two files will be submitted. The first file is the Clinical Chemistry History to be distributed with data prior to the meeting and should include contributors, signalment, concise history and clinical findings. The submitter is also encouraged to provide questions to be answered at the case review session. It is hoped that these questions will inspire participants to review and investigate the data before the meeting. The second file is the Clinical Chemistry Summary to be distributed at the meeting and should include the information on the first file, plus diagnosis, discussion (including answers to the questions that were provided) and references.

### When and Where to Submit

The deadline for submission of cases is June 15, 2011. Submitters will be notified of the results of the selection process by August 1, 2011. It is anticipated that 2-4 cases will be selected for presentation, depending on the complexity of the cases. Be sure to include your e-mail address with your submission.

### For additional information please contact:

Dr. Anne Provencher Bolliger  
[provencher.bolliger@hotmail.com](mailto:provencher.bolliger@hotmail.com)

### Case submission and material should be sent to:

Case Review Slides and Mystery Slides  
American Society for Veterinary Clinical Pathology  
2424 American Lane  
Madison, WI 53704  
Telephone: +1-608-443-2479

## Second Call: Officer Nominations 2011 ASVCP Elections

---

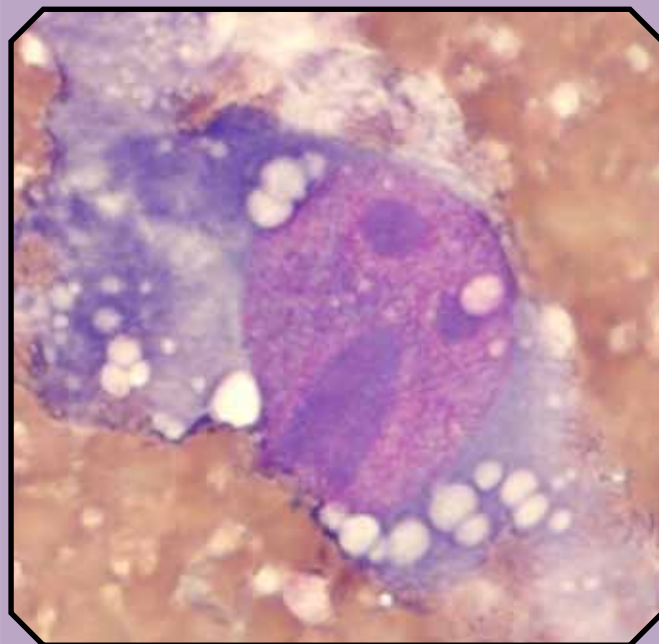
The Nominations Committee is seeking nominations for two officers: First-Year Executive Board Member and President-Elect. Nominees must be able to attend the ASVCP Executive Board meeting at the Annual Meeting over the next 5 years, and participate in telephone conferences and e-mail discussions during each year. The nominees should be enthusiastic about contributing to the Society's growth and development. The First-Year Executive Board member participates in all decisions of the Executive Board, coordinates the annual Case Review and Chemistry Sessions, and serves as liaison to three standing committees. While the term of service is two years, traditionally the First-Year Executive Board member continues on the Board to become President-elect, President, and Immediate Past-president. Thus, this is a 5-year commitment to the ASVCP. The President-elect serves on the Executive Board, coordinates the Scientific Session at the annual meeting, acts as liaison to several standing committees, and becomes the President of the Society at the end of his/her term of office or if the President is unable to fulfill the duties of the office. We have extended the deadline, and nominations will be accepted until June 21, 2011. Please consider serving your society!

To make nominations for the ASVCP officers, please contact the chair of the Nominations Committee: Dr. Joanne B. Messick at 765-496-1748 (office), 765-337-5395 (mobile) or e-mail [jmessic@purdue.edu](mailto:jmessic@purdue.edu).

## MICROSCOPIC ART CORNER

### Scary cell of the month

*Submitted by Harold Tvedten.*



### Want to see your image here?

Submit fun photomicrographs (previously unpublished) to the ASVCP Secretary, [robin.allison@okstate.edu](mailto:robin.allison@okstate.edu).

## Young Investigator Awards

---

**ASVCP Young Investigator Award:** The ASVCP will present two \$500 awards to the resident or graduate student whose platform presentation is judged best among the competing presentations in the categories of basic science research and clinical research. Eligibility requirements include a degree in veterinary medicine and enrollment in a residency or graduate program in pathology/clinical pathology or a related discipline. The oral presentation must describe original work of the competitor involving clinical or experimental research that relates to clinical pathology. Presenters are required to attend the meeting. Award selection will be based on the scientific content, abstract composition, clarity of presentation and ability to answer questions. Each trainee may submit only one presentation in this competition.

**ACVP Young Investigator Award:** If you are a trainee and have a poster presentation, you can submit it for consideration in the ACVP Young Investigator Award. Any abstract submitted for the ACVP Young Investigator Award is ineligible for the ASVCP Young Investigator Award.

**SUBMITTING YOUR ABSTRACTS FOR CONSIDERATION:** Detailed instructions that explain how to submit an abstract and how to enroll in the ASVCP or ACVP Young Investigator Award competition are available on the ACVP website ([www.acvp.org](http://www.acvp.org)). Leslie Sharkey will coordinate the combined ASVCP/ACVP Clinical Pathology Scientific Session of this meeting. Please direct your inquiries for this session to her at [shark009@umn.edu](mailto:shark009@umn.edu) or call (651) 402-1261.



**Congratulations to  
Jeanne George who received  
the honor of ASVCP Lifetime  
Membership!**

## Second Call: ASVCP Lifetime Achievement Award

---

The Awards Nominating Committee is requesting nominations for the Lifetime Achievement Award to be presented at the annual ASVCP meeting in Nashville, Tennessee, December 3 – 7, 2011. The ASVCP Lifetime Achievement Award program recognizes members of the Society who have contributed to the advancement of the field of veterinary clinical pathology through their research and teaching, and through their work on behalf of the American Society for Clinical Pathology. Nominations should include at least 3 letters of support from ASVCP members, which include a rationale for why this particular member is worthy of this award, and a current CV of the nominee. To make a nomination, please contact Joanne B. Messick, the chair of the Awards Nominating Committee at 765-496-1748 (office), 765-337-5395 (mobile) or e-mail [jmessic@purdue.edu](mailto:jmessic@purdue.edu). The deadline for receipt of all nomination materials is July 1, 2011.

## Final Call: 2011 ASVCP/ACVP Meeting Abstracts Clinical Pathology Scientific Sessions

### *Submissions Due June 1*

---

The Clinical Pathology Scientific Sessions were another resounding success in 2010 – start planning now to submit your abstract for the 2011 meeting. The annual concurrent meeting of the ASVCP and the ACVP will be held December 3-7, 2011, in Nashville, TN. There will be a combined ASVCP/ACVP Clinical Pathology Scientific Session for everyone who has an interest in clinical pathology. This will be a great opportunity to present experimental or clinical research data to colleagues. Submissions from all aspects of the profession are encouraged, including academic, diagnostic, investigative, and toxicologic clinical pathology. The format will be similar to that of the 2010 annual meeting with both oral platform and poster presentations. The final decision regarding presentation format is at the discretion of the Program Committee. We encourage participation by a wide variety of individuals including faculty, senior scientists, diagnostic veterinary pathologists/clinical pathologists, and trainees. Presenters are required to attend the meeting.

**The deadline for abstract submission is June 1, 2011.** Online submission is available at [www.acvp.org](http://www.acvp.org). For further information contact Leslie Sharkey at [shark009@umn.edu](mailto:shark009@umn.edu) or call (651) 402-1261.

## Final Call: Annual ESVCP/ECVP Case Review *Submissions Due May 31*

---

This is the final call for cases for the ESVCP case session on Saturday afternoon September 3, 2011, from 1-4 p.m., at the European College/Society of Veterinary Clinical Pathology (ESVCP/ECVCP) meeting in Dublin, Ireland. The meeting is planned for September 1-3, 2011, with a CE day on August 31 preceding the meeting. The ESVCP/ECVCP meeting will be meeting at Trinity College, Dublin City Centre, Ireland.

Two files should be submitted. One presents the case as an unknown (mystery) case with enough information for others to make or suspect the diagnosis. Then a second file including all information including diagnosis, discussion and references should be included. Examples of previous cases (unknown and with diagnosis) might be available on the website of ESVCP/ECVCP under archive (or search for cases). Previous cases for the ESVCP or ASVCP case sessions should be used as a model of how to formulate your case. Our cases will be published on the ESVCP website prior to the meeting as unknowns and then with diagnoses and discussion after the meeting.

Deadline for submission of cases is May 31, 2011, but priority is given to those submissions arriving first. Please send the two word files of your case submission to Harold Tvedten [tvedten@msu.edu](mailto:tvedten@msu.edu).

## ASVCP Share the Future

### Call for Resident/Graduate Student Travel Grant Applications

Share the Future travel grants are intended to help offset travel costs for clinical pathology residents or graduate students who will be giving talks or poster presentations at the Annual Meeting. The 2011 meeting will be December 3 - 7, 2011, in Nashville, Tennessee. Five travel grants of \$500 each will be awarded.

#### **The application deadline for the 2011 meeting is August 31, 2011.**

Grant recipients will be selected from the applicant pool based on criteria including (not necessarily in this order):

- Quality of the abstract(s) accepted for presentation.
- The distance applicants must travel to attend the meeting – preference will be given to those who are not within an 8-hour drive of the meeting.
- Stage of training – other factors being equal, preference will be given to applicants further in their training.
- Preference will be given to applicants giving oral presentations, particularly those applicants entered in the Young Investigator Award competition. However, poster presentations also will be considered.
- Availability of funding from their institution specifically to support travel to the meeting.

Share the Future travel grant application forms are available online at the ASVCP website [www.asvcp.org/stures/index.cfm](http://www.asvcp.org/stures/index.cfm).

Share the Future travel grants are made possible through the support of ASVCP members and corporate sponsors.



## ASVCP MEMBERSHIP

Membership in the ASVCP is open to veterinary clinical pathologists, clinical pathology residents and graduate students, medical technologists (through the affiliated Veterinary Laboratory Professionals group), anatomic pathologists, and scientists, veterinary and medical specialists, veterinary practitioners, and veterinary students with an interest in clinical pathology.

Download a Membership Brochure at: [www.asvcp.org/join/index.cfm](http://www.asvcp.org/join/index.cfm)

### Call for Resident/Graduate Student Research Grant Applications

Share the Future research grants are intended to help support research by clinical pathology residents and graduate students. Grants will range from \$1,000 to \$2,500. In general, proposals should:

- Focus on an aspect of clinical pathology.
- Be clearly articulated.
- Show potential for contributing to the knowledge base in veterinary clinical pathology.

In 2011, one research grant will be awarded.

#### **The application deadline for 2011 grants is August 31, 2011.**

The grant recipient will be selected from the applicant pool based on criteria including (not necessarily in this order):

- Quality of the research proposal.
- The potential for contributing to the knowledge base of veterinary clinical pathology.
- How much funding, if any, is available to the applicant from their institution for research.
- Preference will be given to applicants who are members or whose advisors are members of the ASVCP.

#### **Application Procedure**

- Applications must be received no later than August 31, 2011.
- Proposals will include the following components:
  - o Abstract (300 words or less);
  - o Specific Aims;
  - o Background and Significance/Importance;
  - o Research Design and Methods; and
  - o Approval for the use of live animals by an Institutional Animal Care and Use Committee (if applicable).

#### **Budget and Time Frame**

- Budgets must fall between \$1,000 and \$2,500.
- Grants will be paid to your department or organization/company, if one exists, and can cover costs such as equipment, hourly assistance, materials, and supplies.
- Budgets cannot include indirect costs, salaries for the investigator(s), or travel to present the results.
- Grant is awarded for a one-year time frame beginning October 1, 2011.

#### **Obligations**

- Recipients must submit a budget statement and summary of progress (500 words or less) within 3 months after the end of the funding period (January 1, 2013).
- An abstract of the completed work will be submitted for consideration at the first eligible ASVCP conference that follows the completion of the grant.
- Any publication(s) resulting from the grant should acknowledge the funding from ASVCP.

Share the Future grant application forms are available online at the ASVCP website [www.asvcp.org/stures/index.cfm](http://www.asvcp.org/stures/index.cfm).

Share the Future grants are made possible through the support of ASVCP members and corporate sponsors.

## General Information

---

### ASVCP NATIONAL OFFICE:

Members can contact the ASVCP National Office at 2424 American Lane, Madison, WI 53704; Phone: 608-443-2479; Fax: 608-443-2474 or 608-443-2478; e-mail: [info@asvcp.org](mailto:info@asvcp.org).

### Electronic Newsletters:

Members who have provided the Society with an e-mail address will receive an e-mail containing a link to the newsletter as soon as each issue is posted to the ASVCP website. The newsletters are posted in PDF format. If you have any problems accessing the newsletter electronically, please contact the ASVCP National Office, [info@asvcp.org](mailto:info@asvcp.org), or Secretary, Robin Allison, [robin.allison@okstate.edu](mailto:robin.allison@okstate.edu). Members who do not have an e-mail access will receive paper copies.

### Change of Address:

Please send any changes in mailing address or electronic mail address to the ASVCP National Office at 2424 American Lane, Madison, WI 53704; e-mail: [info@asvcp.org](mailto:info@asvcp.org), Phone: 608-443-2479; Fax: 608-443-2474 or 608-443-2478. You can also update your information on the website, under the Members Only Section.

### ASVCP Newsletter and/or Website Submissions:

If you have material of interest to post in the newsletter or on the ASVCP website ([www.asvcp.org](http://www.asvcp.org)), please contact the ASVCP Secretary, Robin Allison, Center for Veterinary Health Sciences, Department of Veterinary Pathobiology, 250 McElroy Hall, Stillwater, OK 74078; e-mail [robin.allison@okstate.edu](mailto:robin.allison@okstate.edu), Phone 405-744-6279; Fax 405-744-5275; or contact the ASVCP National Office at 2424 American Lane, Madison, WI 53704; e-mail: [info@asvcp.org](mailto:info@asvcp.org).

### Membership Application:

Member application forms are available at the ASVCP website ([www.asvcp.org](http://www.asvcp.org)) or by contacting the ASVCP National office 2424 American Lane, Madison, WI 53704; Phone 608-443-2479; e-mail: [info@asvcp.org](mailto:info@asvcp.org).

## Announcements

---

### Committees:

If you are interested in serving on one of the ASVCP committees as a member or a committee chair, please contact any of the EB members or Susan Rees, [srees@reesgroupinc.com](mailto:srees@reesgroupinc.com). Getting involved is a great way to meet new people and contribute to your Society.

### Institutional Slide Sets:

Due to the high demand for slide sets, institutions that are interested in reserving a set for the upcoming year are asked to contact Anne Provencher Bolliger, [provencher.bolliger@hotmail.com](mailto:provencher.bolliger@hotmail.com). A notice to all members will also be sent out through the listserve.

### Reviewers for Clinical and Chemistry Cases:

If you are interested in being a reviewer for next year's hematology/cytology cases or chemistry cases, please contact Anne Provencher Bolliger, [provencher.bolliger@hotmail.com](mailto:provencher.bolliger@hotmail.com).



## ASVCP Committee Updates

### Quality Assurance and Laboratory Standards (QALS) Committee

Submitted by Bente Flatland and Shannon Pedersen, Committee Chairs



**Bente Flatland**



**Shannon Pedersen**

The Quality Assurance and Laboratory Standards (QALS) Committee has embarked on an important new project through its Method Validation (MV) subcommittee. The MV subcommittee (chaired by Dr. Kendal Harr) is charged with establishing draft guidelines for allowable total error (Tea) for commonly measured biochemical analytes for dogs, cats, and horses. Eventually, Tea for other analytes (hematology, blood gas, coagulation, endocrine assays) will also be addressed. The MV subcommittee is working closely with both large and small animal internists to recommend sound, clinical decision limit-based Tea's that are appropriate given the analytical performance capability of biochemistry analyzers commonly used in veterinary clinical pathology laboratories. If you are interested in helping with this project (or have an internist friend who might be interested), please contact Kendal Harr ([drharr@gmail.com](mailto:drharr@gmail.com)). Another important, ongoing project is establishing quality assurance guidelines for point-of-care (POC) testing in veterinary medicine. The POCT subcommittee (chaired by Dr.

Bente Flatland) is writing draft guidelines for managing small, bench-top and handheld analyzers in veterinary medicine, including those measuring multiple biochemical analytes and hematology analyzers. Also addressed will be coagulation analyzers measuring clotting times, glucometers, lactate meters, and ammonia meters. Our goal is to write sound but practical guidelines that can be applied in any setting where POC analyzers are used, from private practice to academia. Other ongoing QALS projects include pursuing German, French, and Portuguese translations of the ASVCP Quality Assurance guidelines (see [www.asvcp.org/pubs/qas/index.cfm](http://www.asvcp.org/pubs/qas/index.cfm)), quality assurance guidelines for immunocytochemistry, and planning for the ASVCP 2012 Pre-Meeting Workshop. If you are interested in joining the QALS Committee, please contact Bente Flatland ([bflatlan@utk.edu](mailto:bflatlan@utk.edu)) or Shannon Pedersen ([shannonp@pclv.net](mailto:shannonp@pclv.net)).

### Veterinary Laboratory Professional Committee

Submitted by Rick DeFrancisco, Committee Chair



**Rick DeFrancisco**

We are getting our program together for the Annual Meeting in Nashville Tennessee, scheduled from Sunday, December 4 to Tuesday, December 6. The speakers we have confirmed are as follows:

- Dr. Casey LeBlanc (The University of Tennessee) – Utilization of Flow Cytometric Techniques to Diagnose and Prognose Cancer.
- Dr. Joanne Messick (Purdue University) – The Hemoplasmas of the Cat
- Dr. Stephanie French (CROW, Clinic for the Rehabilitation of Wildlife) – Tales from the Wild Side
- Dr. Elizabeth Spangler (Auburn University) – TEG
- Dr. Michael Fry (The University of Tennessee) – Recent Advances in the Understanding of Iron Metabolism
- Dr. Mark Risniw (Veterinary Information Network) – VIN QC Material Study

### Regulatory Affairs Committee

Submitted by Lindsay Tomlinson, Committee Chair



**Lindsay Tomlinson**

The Regulatory Affairs Committee is looking forward to presenting this year's ASVCP Pre-Meeting Workshop, 'The 2011 Guide to Toxicologic Clinical Pathology,' at the ACVP Annual Meeting in Nashville, TN. The schedule is listed below. Best practices will be proposed and there will be time included for animated discussions. We look forward to seeing you all there!

ASVCP Pre-Meeting Workshop : The 2011 Guide to Toxicologic Clinical Pathology, Session Chair: Lindsay Tomlinson, DVM, DVSc, Pfizer Inc.

8:00 a.m. – 8:10 a.m.

The ASVCP Regulatory Affairs Committee: Focus on Best Practices in Toxicologic Clinical Pathology

*Lindsay Tomlinson, DVM, DVSc, Pfizer Inc.*

*Anne Provencher Bolliger, DVM, MS, Charles River Laboratories*

8:10 a.m. – 9:30 a.m.

Routine Laboratory Investigations: Hematology, Coagulation, Clinical Biochemistry, and Urinalysis

*Lila Ramaiah, DVM, PhD, Huntingdon Life Sciences*

*Mehrdad Ameri, DVM, MS, PhD, Pfizer Inc.*

9:30 a.m. – 10:00 a.m. PANEL DISCUSSION

10:00 a.m. – 10:15 a.m. BREAK

10:15 a.m. – 11:00 a.m.

Non Routine Laboratory Investigations: Bone Marrow, Cytology, Endocrinology and Others

*Denise Bounous, DVM, PhD, Bristol-Myers Squibb Co.*

11:00 a.m. – 11:45 a.m.

Instrument and Method Validation

*Barbara Von Beust, Dr. med. vet., PhD, Labor am Zugersee*

11:45 a.m. – 12:45 p.m. LUNCH

12:45 p.m. – 1:45 p.m.

New Biomarkers: Identification, Qualification and Implementation of New Biomarkers

*Daniela Ennulat, DVM, PhD, Glaxo SmithKline*

1:45 p.m. – 3:00 p.m.

Data Analysis / Interpretation of Data AND Overview of Roles and Responsibilities, Laboratory Personnel, and Report Process

*Laura Boone, DVM, PhD, Covance Inc.*

*Kelley Penraat, DVM, PhD, Alpha-Omega Vet Consultant Services*

3:00 p.m. – 3:30 p.m. PANEL DISCUSSION

3:30 p.m. – 3:45 p.m. BREAK

3:45 p.m. – 5:00 p.m.

Beyond CBC and Chemistry Panel: The Expanding Roles of the Clinical Pathologist in Drug Development

*Lindsay Tomlinson, DVM, DVSc, Pfizer Inc.*

## News from *Veterinary Clinical Pathology*

---

Submitted by Karen Young, Editor-in-Chief

- 2010 was a good year for the journal, which is reflected in the journal's finances. In a year of library budget-cutting, we achieved a 101% renewal rate on institutional subscriptions, which is fantastic performance. In addition, we saw a 31% increase in usage which is especially important for our institutional subscription renewals. We saw increases in personal and member subscriptions to the journal with the addition of the ISACP; growth in the number of EBSCO institutions accessing the journal; increases in individual articles sales; increases in the number of people subscribed to the journal's e-alerts; and many other successes. In short, the journal grew in every aspect of its performance with the exception of the Impact Factor ranking.
- The Editor-in-Chief is pleased to announce the appointment of a new Section Editor, Dr. Mads Kjølgaard-Hansen from the University of Copenhagen. Mads has served on the editorial board and joins the 7 other section editors. He brings broad expertise in method and instrument validation, coagulation, acute phase proteins, and many other areas to the journal and is a welcome addition.
- In 2005, we began publishing a new feature in *Veterinary Clinical Pathology* called Laboratory Medicine — Yesterday • Today • Tomorrow. The feature was created to highlight the contributions of veterinary clinical pathology to the field of biomedical practice, education, and research by publishing notes of historical interest, current trends, progress on the horizon, and exquisite examples of images or laboratory data. In the 6 years since we initiated this feature, we have had numerous examples of beautiful images. In addition, we have published historical vignettes on warfarin, Robin Coombs and the test named after him, bovine reticulocytes and lymphocytes, abnormal mitoses in cytologic samples, and a pioneer in aquatic animal clinical pathology.

Unique images are always welcome, and the editorial staff members thank you for the many contributions. We are also very interested in the historical pieces as they bring the richness of our discipline to light.

Submissions may be sent to Karen Young, Editor-in-Chief, at [youngk@vetmed.wisc.edu](mailto:youngk@vetmed.wisc.edu).

## Tox Path News

---

Submitted by Anne Provencher Bolliger

An important new publication was written by the STP/ASVCP Bone Marrow Working Group, which is comprised in part by members of the ASVCP Regulatory Affairs Committee:

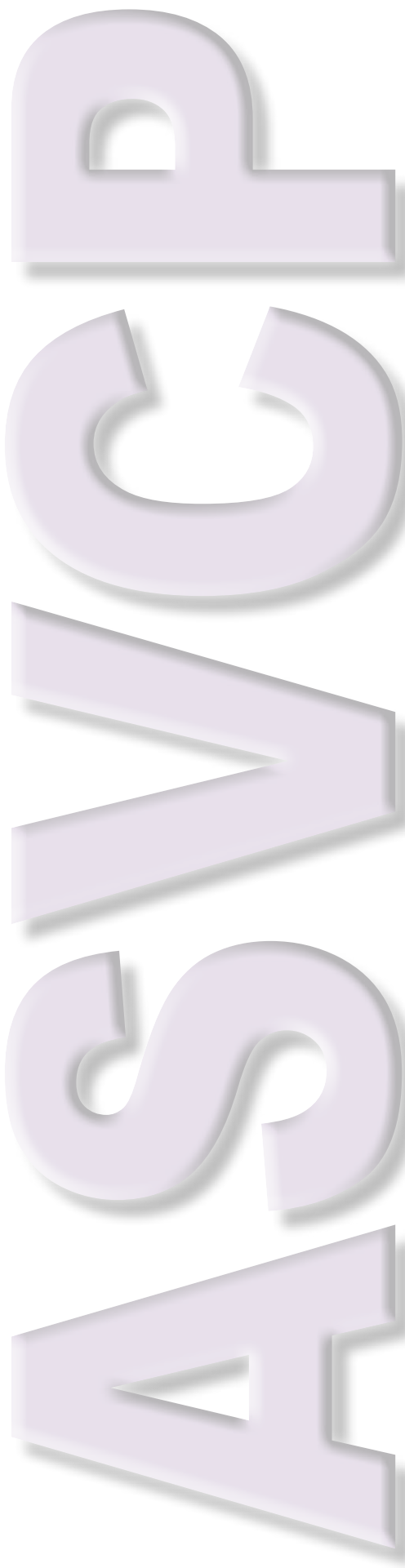
### **Best practices for evaluation of bone marrow in nonclinical toxicity studies.**

[www.ncbi.nlm.nih.gov/pubmed/21300792](http://www.ncbi.nlm.nih.gov/pubmed/21300792)

Reagan WJ, Irizarry-Rovira A, Poitout-Belissent F, Bolliger AP, Ramaiah SK, Travlos G, Walker D, Bounous D, Walter G; Bone Marrow Working Group of ASVCP/STP.

*Toxicol Pathol.* 2011 Feb; 39(2):435-48.

**Abstract:** This manuscript is intended to provide a best practice approach to accurately and consistently assess toxicant-induced bone marrow effects of test articles. In nonclinical toxicity studies, complete blood count data in conjunction with the histological examination of the bone marrow are recommended as the foundation for assessing the effect of test articles on the hematopoietic system. This approach alone can be used successfully in many studies. However, in some situations it may be necessary to further characterize effects on the different hematopoietic lineages, either by cytological or flow cytometric evaluation of the bone marrow. Both modalities can be used successfully, and which one is selected will depend on the expertise, preference of the facility, and the nature of the change in the bone marrow. Other specialized techniques such as clonogenic assays or electron microscopy are used rarely to further characterize hematotoxicity. The indications and techniques to successfully employ histological, cytological, or flow cytometric evaluation as well as clonogenic assays and electron microscopy are reviewed.



## • ASVCP Important Dates •

### May

**Comments on Reference Interval Guidelines** ([www.asvcp.org](http://www.asvcp.org)) due May 30, 2011. [friedrik@svm.vetmed.wisc.edu](mailto:friedrik@svm.vetmed.wisc.edu)

**ESVCP/ECVCP Case Review** submissions due May 31, 2011. [tvedten@msu.edu](mailto:tvedten@msu.edu)

### June

**ASVCP/ACVP Scientific Abstracts** submissions due June 1, 2011. [www.asvcp.org](http://www.asvcp.org)

**ASVCP Cytology and Hematology Case Review** submissions due June 15, 2011. [www.asvcp.org](http://www.asvcp.org)

**ASVCP Clinical Chemistry Review** submissions due June 15, 2011. [www.asvcp.org](http://www.asvcp.org)

**ASVCP Elections** nominations due June 21, 2011. [jmessic@purdue.edu](mailto:jmessic@purdue.edu)

### July

**ASVCP Lifetime Achievement Award** nominations due July 1, 2011. [jmessic@purdue.edu](mailto:jmessic@purdue.edu)

### August

**Share the Future Research and Travel Grant** applications due August 31, 2011. [www.asvcp.org/stures/index.cfm](http://www.asvcp.org/stures/index.cfm)

### September

**ACVP Board Examination** September 20-21, 2011, Ames, Iowa. [www.acvp.org](http://www.acvp.org)

## Upcoming Meetings

### June

**ACVIM Forum**  
June 15-18, 2011  
Denver, Colorado  
[www.acvim.org](http://www.acvim.org)

**Society of Toxicologic Pathologists (STP) Annual Meeting**  
June 19-23, 2011  
Denver, Colorado  
[www.toxpath.org](http://www.toxpath.org)

### July

**American Association of Clinical Chemistry Annual Meeting**  
July 24-28, 2011  
Atlanta, Georgia  
[www.aacc.org](http://www.aacc.org)

**American Society for Clinical Laboratory Science (ASCLS) Annual Meeting**  
July 26-30, 2011  
Atlanta, Georgia.  
[www.ascls.org](http://www.ascls.org)

**AVMA Annual Convention**  
July 16-19, 2011  
St. Louis, Missouri  
[www.avmaconvention.org](http://www.avmaconvention.org)

### September

**European College/Society of Veterinary Clinical Pathology (ESVCP/ECVCP) Annual Meeting**  
September 1-3, 2011  
Dublin, Ireland  
[www.esvcp.com](http://www.esvcp.com)

**The 21st Congress of the European College of Veterinary Internal Medicine - Companion Animal**  
September 8-10, 2011  
Sevilla, Spain  
[www.ecvimcongress.org](http://www.ecvimcongress.org)

### October

**American Society for Clinical Pathology (ASCP) Annual Meeting**  
October 19-23, 2011  
Las Vegas, Nevada  
[www.ascp.org](http://www.ascp.org)

### November

**Veterinary Cancer Society (VCS) Conference**  
November 4-7, 2011  
Albuquerque, New Mexico  
[www.vetcancersociety.org](http://www.vetcancersociety.org)

**AAVLD/USAHA 54th Annual Meeting**  
September 29-October 5, 2011  
Buffalo, New York  
[www.aavld.org](http://www.aavld.org)

**American Society of Cytopathology 59th Annual Scientific Meeting**  
November 4-8, 2011  
Baltimore, Maryland  
[www.cytopathology.org](http://www.cytopathology.org)

### December

**ASVCP/ACVP Annual Meeting**  
December 3-7, 2011  
Nashville, Tennessee  
[www.acvp.org](http://www.acvp.org) or [www.asvcp.org](http://www.asvcp.org)



# ASVCP/ACVP Annual Meeting

December 3-7, 2011, Nashville, Tennessee

Have you made plans to attend?

Secure your hotel reservations at the Renaissance Nashville Hotel.

Plan to fly into the Nashville International Airport.

Online registration will be available this summer.